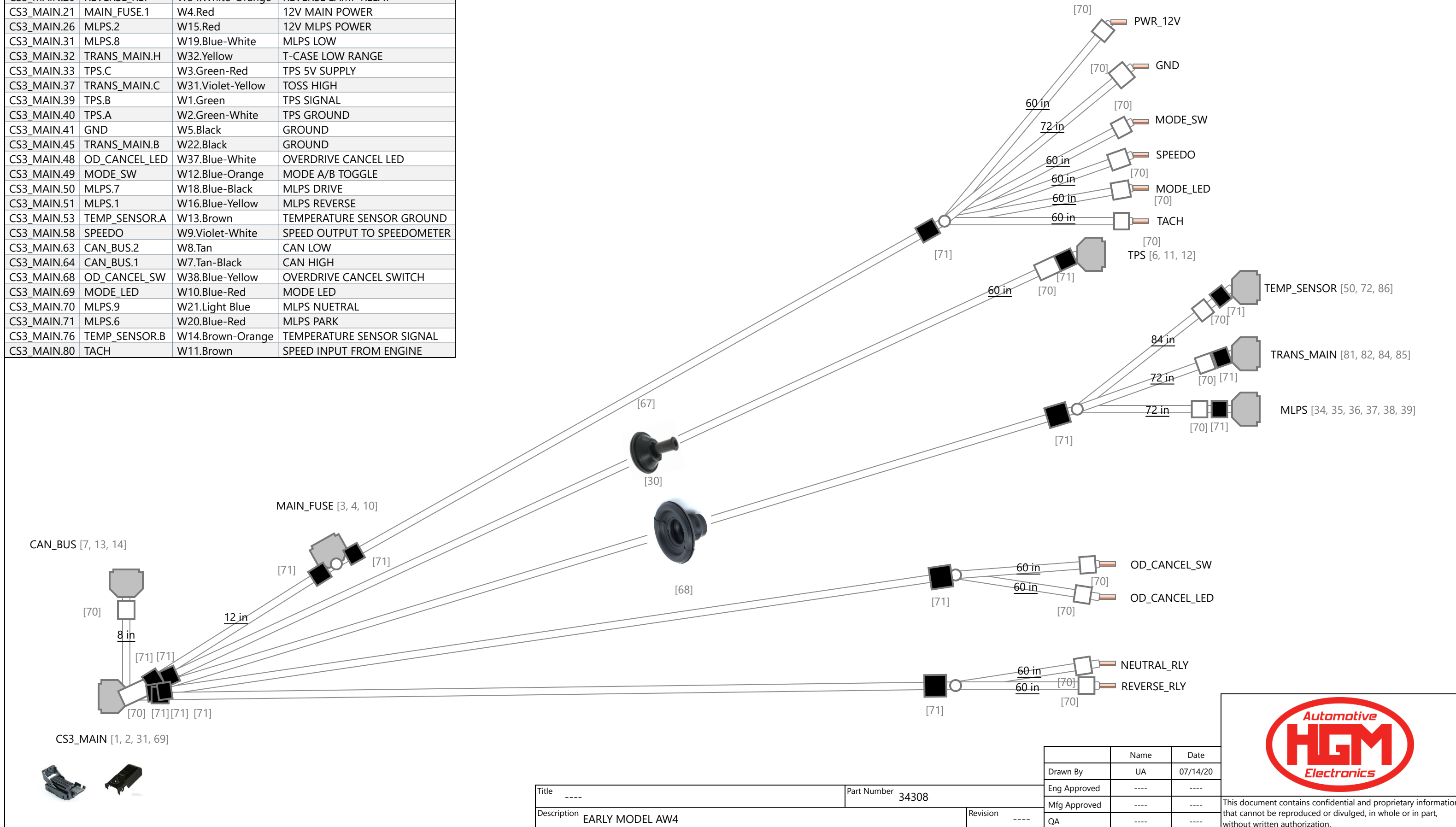


From	To	Conductor	Notes
CS3_MAIN.6	TRANS_MAIN.E	W27.Green-White	TCC SOLENOID
CS3_MAIN.10	MLPS.3	W17.Blue-Orange	MLPS SECOND GEAR
CS3_MAIN.17	TRANS_MAIN.G	W26.Blue-Yellow	SHIFT SOLENOID 1
CS3_MAIN.18	TRANS_MAIN.F	W25.Yellow-Blue	SHIFT SOLENOID 2
CS3_MAIN.19	NEUTRAL_RLY	W33.White-Brown	NEUTRAL START RELAY
CS3_MAIN.20	REVERSE_RLY	W34.White-Orange	REVERSE LAMP RELAY
CS3_MAIN.21	MAIN_FUSE.1	W4.Red	12V MAIN POWER
CS3_MAIN.26	MLPS.2	W15.Red	12V MLPS POWER
CS3_MAIN.31	MLPS.8	W19.Blue-White	MLPS LOW
CS3_MAIN.32	TRANS_MAIN.H	W32.Yellow	T-CASE LOW RANGE
CS3_MAIN.33	TPS.C	W3.Green-Red	TPS 5V SUPPLY
CS3_MAIN.37	TRANS_MAIN.C	W31.Violet-Yellow	TOSS HIGH
CS3_MAIN.39	TPS.B	W1.Green	TPS SIGNAL
CS3_MAIN.40	TPS.A	W2.Green-White	TPS GROUND
CS3_MAIN.41	GND	W5.Black	GROUND
CS3_MAIN.45	TRANS_MAIN.B	W22.Black	GROUND
CS3_MAIN.48	OD_CANCEL_LED	W37.Blue-White	OVERDRIVE CANCEL LED
CS3_MAIN.49	MODE_SW	W12.Blue-Orange	MODE A/B TOGGLE
CS3_MAIN.50	MLPS.7	W18.Blue-Black	MLPS DRIVE
CS3_MAIN.51	MLPS.1	W16.Blue-Yellow	MLPS REVERSE
CS3_MAIN.53	TEMP_SENSOR.A	W13.Brown	TEMPERATURE SENSOR GROUND
CS3_MAIN.58	SPEEDO	W9.Violet-White	SPEED OUTPUT TO SPEEDOMETER
CS3_MAIN.63	CAN_BUS.2	W8.Tan	CAN LOW
CS3_MAIN.64	CAN_BUS.1	W7.Tan-Black	CAN HIGH
CS3_MAIN.68	OD_CANCEL_SW	W38.Blue-Yellow	OVERDRIVE CANCEL SWITCH
CS3_MAIN.69	MODE_LED	W10.Blue-Red	MODE LED
CS3_MAIN.70	MLPS.9	W21.Light Blue	MLPS NUETRAL
CS3_MAIN.71	MLPS.6	W20.Blue-Red	MLPS PARK
CS3_MAIN.76	TEMP_SENSOR.B	W14.Brown-Orange	TEMPERATURE SENSOR SIGNAL
CS3_MAIN.80	TACH	W11.Brown	SPEED INPUT FROM ENGINE

Revisions			
Rev.	Date	Author	Description
A	7/2/2020	Ulysses Aguirre	



Title	----	Part Number	34308	
Description	EARLY MODEL AW4		Revision	----

	Name	Date
Drawn By	UA	07/14/20
Eng Approved	----	----
Mfg Approved	----	----
QA	----	----



This document contains confidential and proprietary information that cannot be reproduced or divulged, in whole or in part, without written authorization.